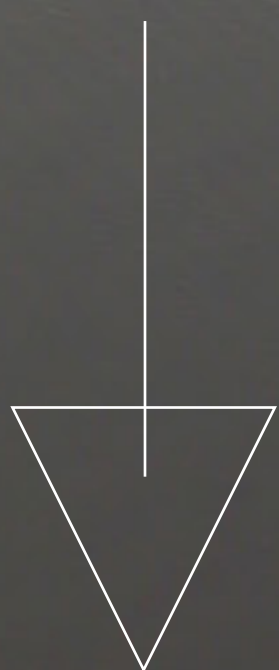


COLT



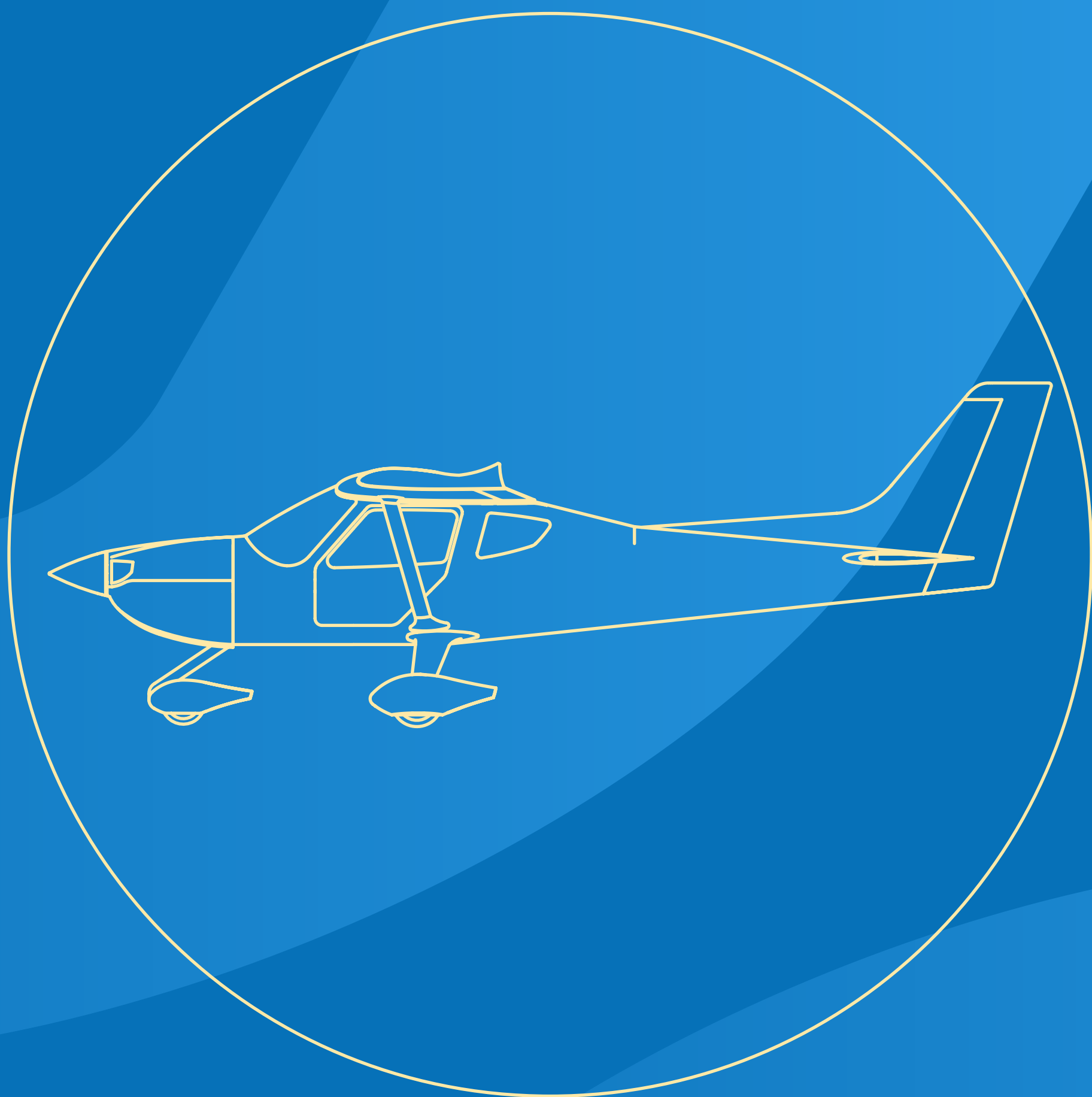
BUILT TO FORGE NEW PILOTS

inpaer 



 **TEXAS
AIRCRAFT**

COLT



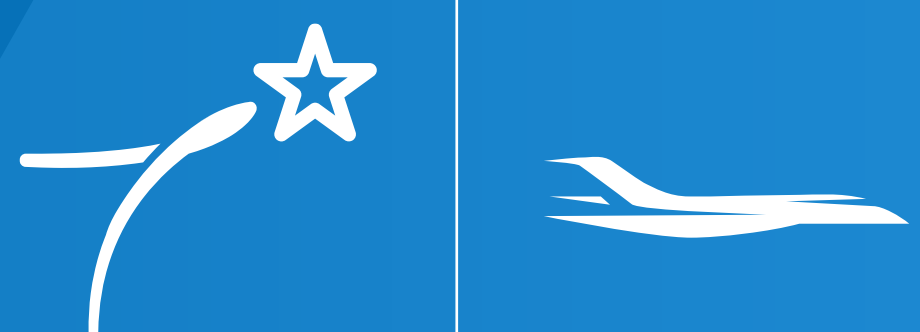
5 years Warranty

or

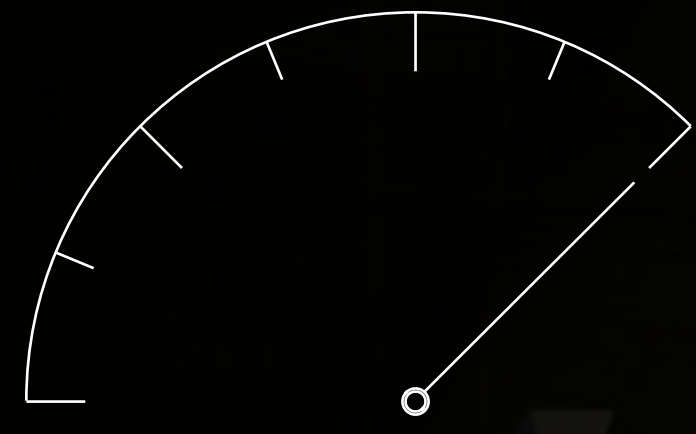
500 hours

*Airframe Only

Contact our sales team to learn more



COLT



120 knots / 222 km/h



2 seats



643 NM / 1190 Km



6h + 30 minutes



PERFORMANCE

Maximum Cruise Speed:

120 knots TAS (222 km/h) @ 2000 ft –
3h45 endurance + 30 min reserve

Cruise Speed (V_e) @75% Power:

110 knots TAS (203 km/h) @4000 ft –
5h30 endurance + 30 min reserve

Stall Speed – Clean (V_s):

45 knots CAS (83 km/h)

Stall Speed – Flaps (V_{so}):

40 knots CAS (74 km/h)

Takeoff Distance (50ft Obstacle):

1.085ft (361m)

Landing Distance (50ft Obstacle):

1.286ft (392m)

Climb Rate (V_y): 681 fpm

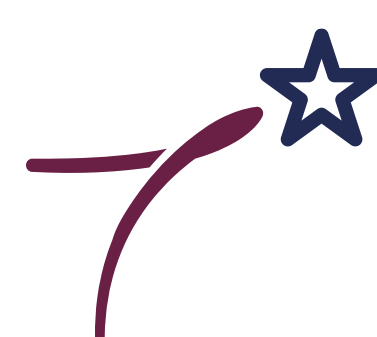
CONFIGURATION

Engine

- » Rotax 912 ULS
- » 100 HP @ 5.800RPM
- » 5.4 Gal/h (18 L/h) @ 75% power.
- » TBO 2,000 h

Propeller

- » Sterna S69CBMR
- » Three Blades
- » 69" Diameter



DATA SHEET

Service Ceiling: 14.500ft

Fuel Capacity: 32 Gal (120L)

Range (full tank) @ 4.800 RPM/6000ft:
643 NM / 1190 km

Endurance (full tank) @ 4.800 RPM/6000ft:
6h + 30 min reserve

Empty Weight: 851lb (386kg)**

Useful Load: 649lb (294kg) empty**

*All specifications are subjected to change without notice.

**Weight may vary depending on the aircraft's configuration.

DIMENSIONS

Length: 23'3" (6.96m)

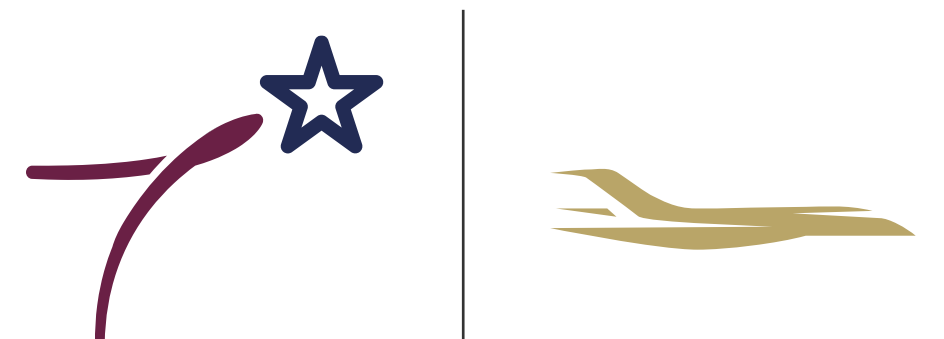
Height: 7'7" (2.39m)

Wingspan: 32'2" (9.82m)

Cabin Height: 3'8" (1.18m)

Seat Width: 16" (40cm)

Max Baggage Weight: 44lb (20kg)



COLT

GMC 507 Garmin
Autopilot

GTR 205B Garmin
COM Radio

G3X Garmin
10" Touch Display

Start Key ACS

Lemo Plug



COLT

LED Light

2nd Screen Garmin
G3X Touch de 10"

ELT

Garmin GAD 27
for Flap Position

G5 Garmin
Backup Display



COLT



COLT S

- » VFR day
- » PFD - Screen Garmin G3X
- » Transponder - Garmin GTX45R
- » Radio - Garmin GTR 205B
- » ELT - Artex 345

Backup (Analog):

- » Airspeed Indicator
- » Vertical Airspeed Indicator
- » Altimeter
- » Slip Indicator
- » Compass

PRICE

US\$222.599



COLT



COLT SL

- » VFR night
- » PFD - Screen Garmin G3X
- » Auto Pilot - Garmin GMC 507
- » Transponder - Garmin GTX45R
- » Radio - Garmin GTR 205B
- » ELT - Artex 345

Backup (Analog):

- » Airspeed Indicator
- » Vertical Airspeed Indicator
- » Altimeter
- » Slip Indicator
- » Compass

PRICE

US\$231.999



COLT



COLT SLS

- » VFR night
- » PFD - Screen Garmin G3X
- » MFD - Screen Garmin G3X
- » Auto Pilot - Garmin GMC 507
- » Transponder - Garmin GTX45R
- » Radio - Garmin GTR 205B
- » ELT - Artex 345
- » Garmin G5 Backup Display
- » Compass

PRICE

US\$245.999



COLT



COLT IFR

COLT SL or SLS +

- » GTN 650Xi Black
- » GMA 245 Audio Panel
- » GAP 26 Pitot Heated
- » GAD 29 ARINC 429
- » Alternator (Rotax 912ULS only)
- » Garmin G5 Backup Display
- » Compass

PRICE

Colt SLS IFR

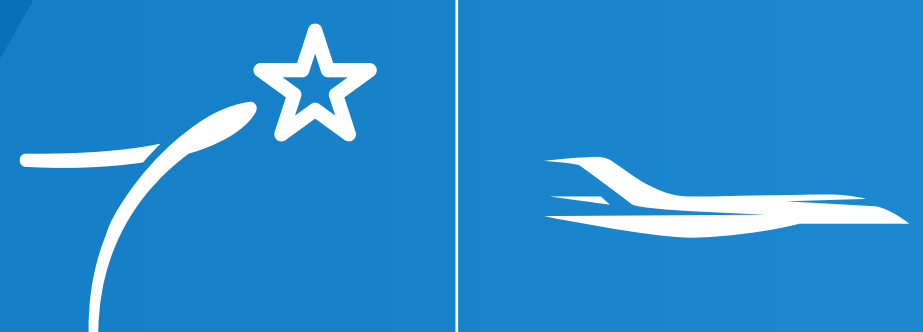
US\$291.999



COLT

***All Prices listed here are
for 912ULS
engine only***

*Contact our sales team for
more information



COLT

INTERIOR



Premium two-tone
leather interior



INTERIOR



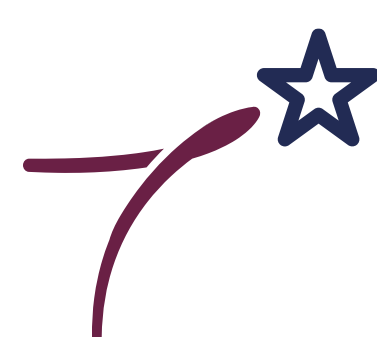
Also monochromatic version



PAINTING LAYOUT



Standard and Custom Options



COLT





Contact our Sales Team for more information

North America

+1 682 414-5747

Latin America

+55 19 9 9888-3530

or

Visit our website and social media

texasaircraft.com

inpaer.com.br

